

# *Suppressed Effective Viscosity in the Bulk Intergalactic Plasma*

**Irina Zhuravleva (UChicago)**

E. Churazov (MPA), A. Schekochihin (Oxford)

S. Allen (Stanford), A. Vikhlinin (CfA/Harvard), N. Werner (MTA-Eötvös)

*Nature Astronomy*, 340 (2019), *arXiv*: 1906.06346  
Image: NASA/CXC/SDSS/I. Zhuravleva

# Intergalactic / Intracluster Medium



$$T \sim 7 \text{ keV} \quad n_e \sim 10^{-3} \text{ cm}^{-3}$$

Coulomb mean free path:

$$\lambda_{\text{mfp}} = 15 \text{ kpc} \left( \frac{T}{7 \text{ keV}} \right)^2 \left( \frac{n_e}{10^{-3} \text{ cm}^{-3}} \right)$$

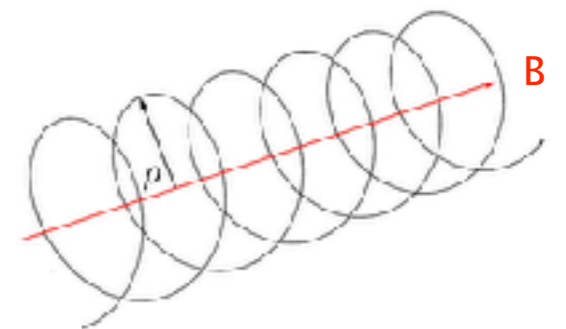
$\sim 1 - 100 \text{ kpc}$

$$B \sim 1 \text{ } \mu\text{G} \quad \beta \sim P/P_B \sim 100$$

Gyroradius of particle:

$$r_g = \frac{mV_{\perp}}{|q|B} \sim 3 \cdot 10^{-14} \text{ kpc} (\sim 1000 \text{ km})$$

$$r_g \ll \lambda_{\text{mfp}}$$



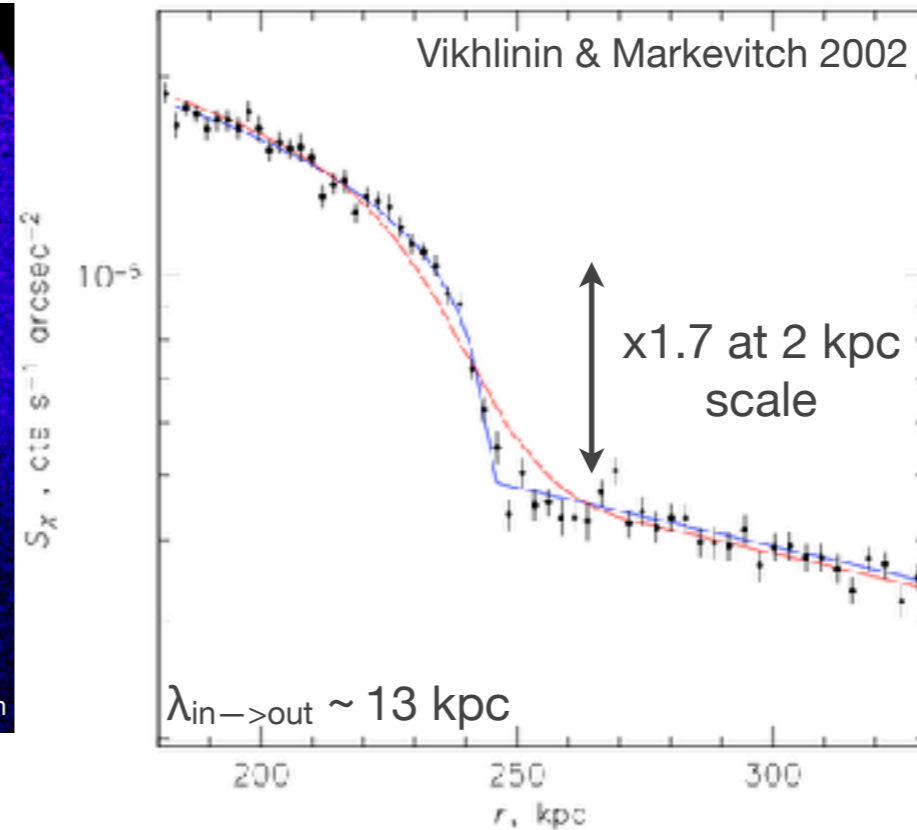
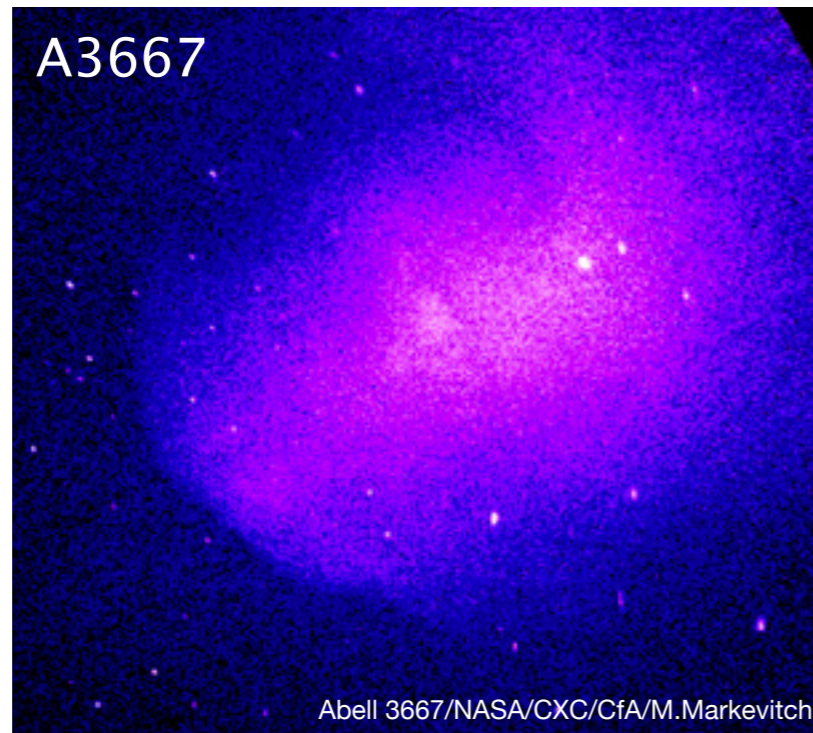
- *weakly-collisional plasma*
- *high- $\beta$  plasma*

Do clusters follow the hydrodynamic description  
on micro scales?

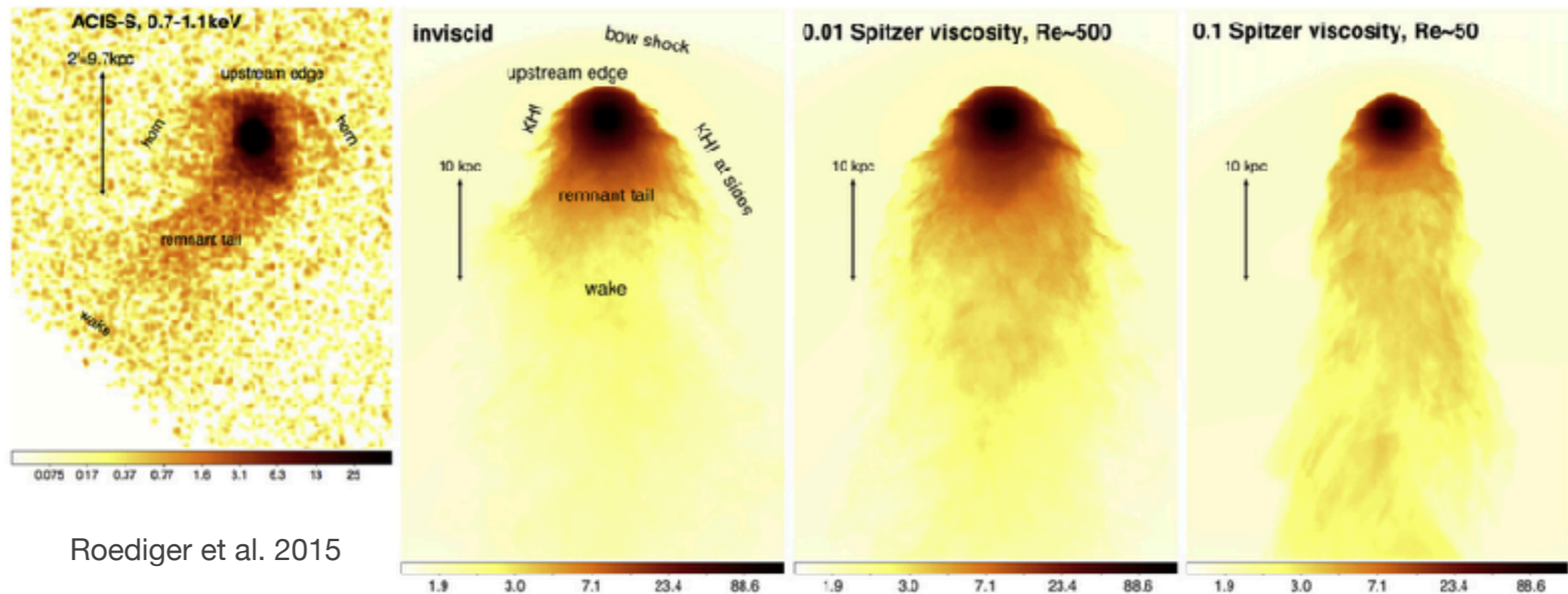
Do magnetic fields and plasma instabilities change  
the properties of the ICM? How?

What are the transport properties of the hot  
intergalactic plasma?

# Suppressed Transport Process in the ICM



M89



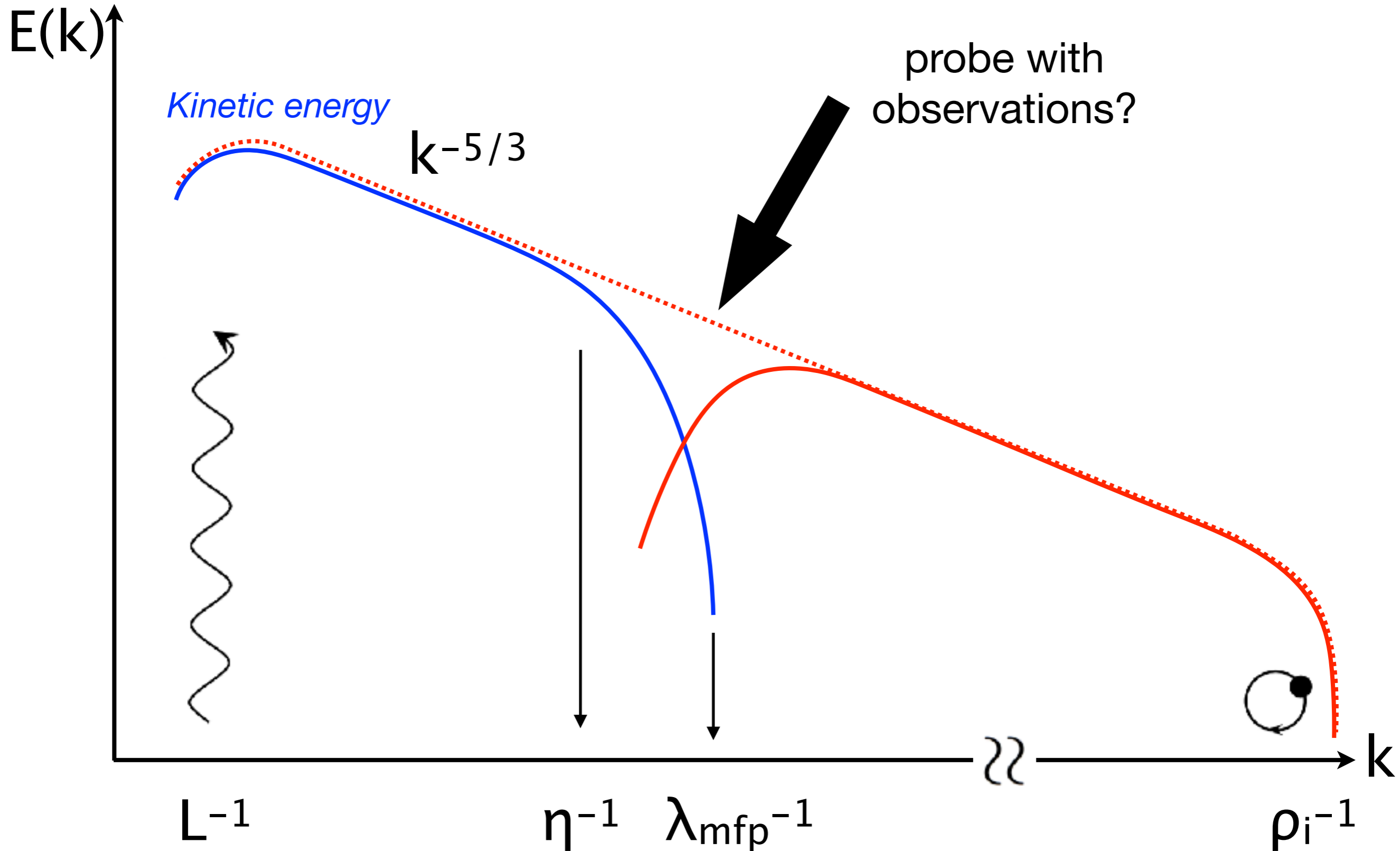
see also Markevitch & Vikhlinin 07, Machocek et al. 05, Roediger et al. 12, ZuHone et al. 11,13,15, Werner et al. 16, Su et al. 17 etc.

# Transport processes in the bulk of the gas?



Does ICM follow basic hydrodynamic model on microscales?

# Weakly-collisional Plasma



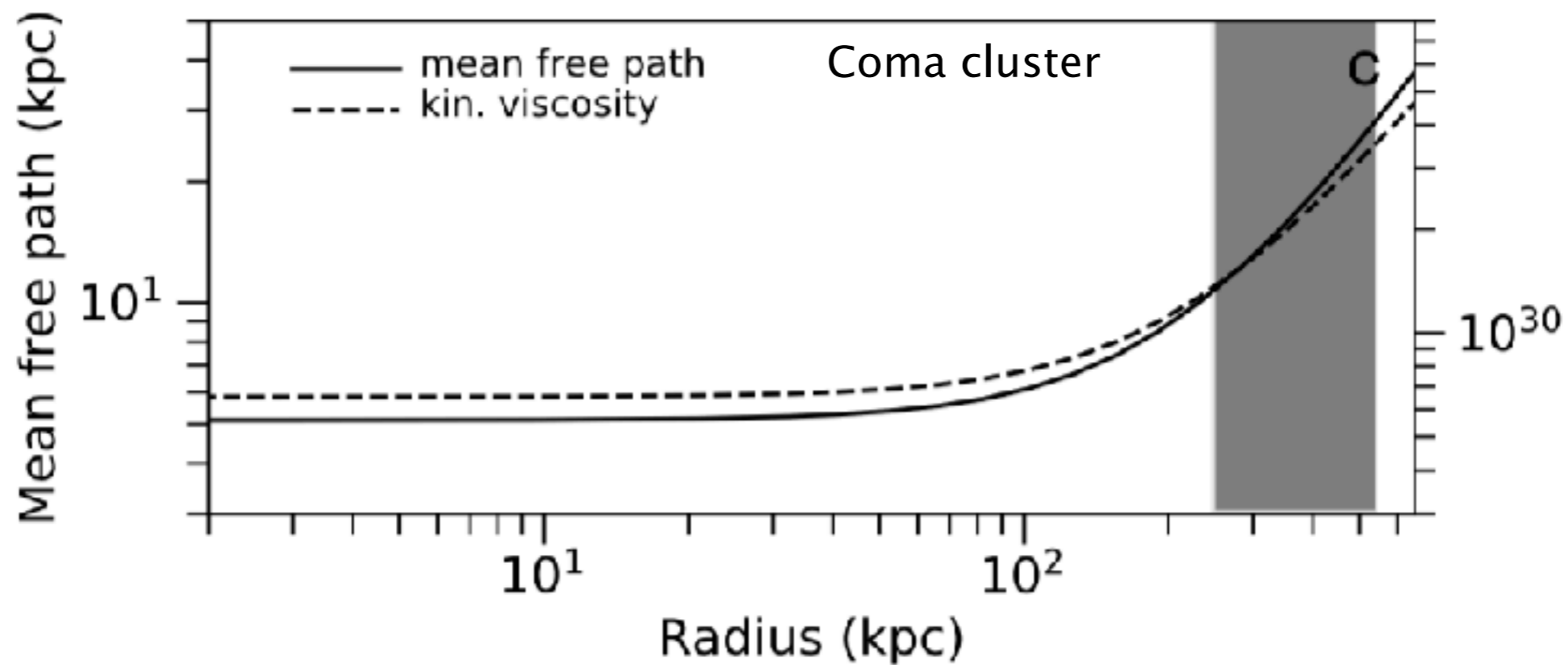
# Challenge I: small mfp

bright cluster cores

$$\lambda_{\text{mfp}} < \text{few kpc}$$

non-cool-cores, off the center

$$\lambda_{\text{mfp}} \sim T^2 n^{-1}, \text{ 10s of kpc}$$



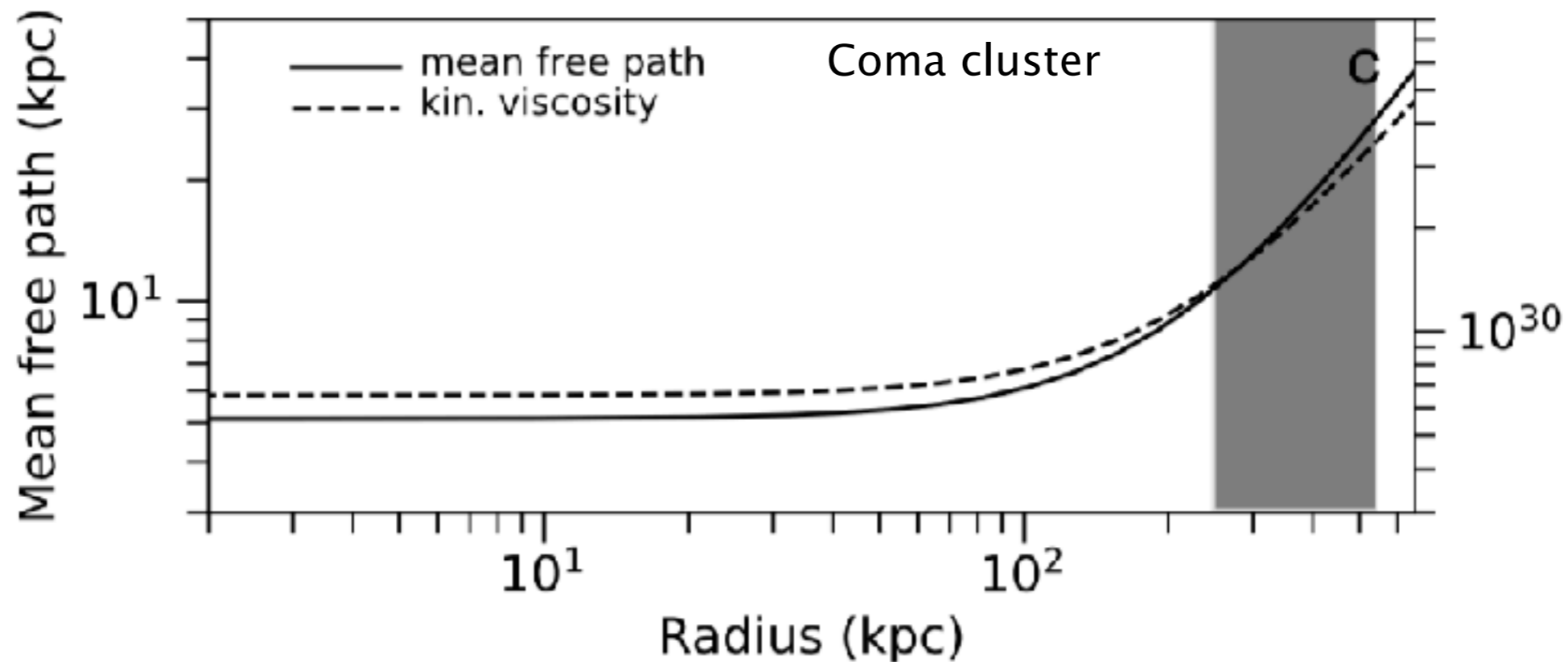
# Challenge I: small mfp

bright cluster cores

$$\lambda_{\text{mfp}} < \text{few kpc}$$

non-cool-cores, off the center

$$\lambda_{\text{mfp}} \sim T^2 n^{-1}, \text{ 10s of kpc}$$



# Challenge II: no direct $V$ measurements



# Indirect Measurements of Velocity Power Spectrum

- ▶ stratification
- ▶ subsonic motions
- ▶ motions are generated on large, buoyancy-dominated scales

$$\longrightarrow \frac{\delta \rho_k}{\rho} = \eta \frac{V_k}{c_s}$$
$$\eta = \sqrt{\frac{H_p}{H_s}} \sim 1$$

Zhuravleva et al. 2014a  
Gaspari et al. 2014

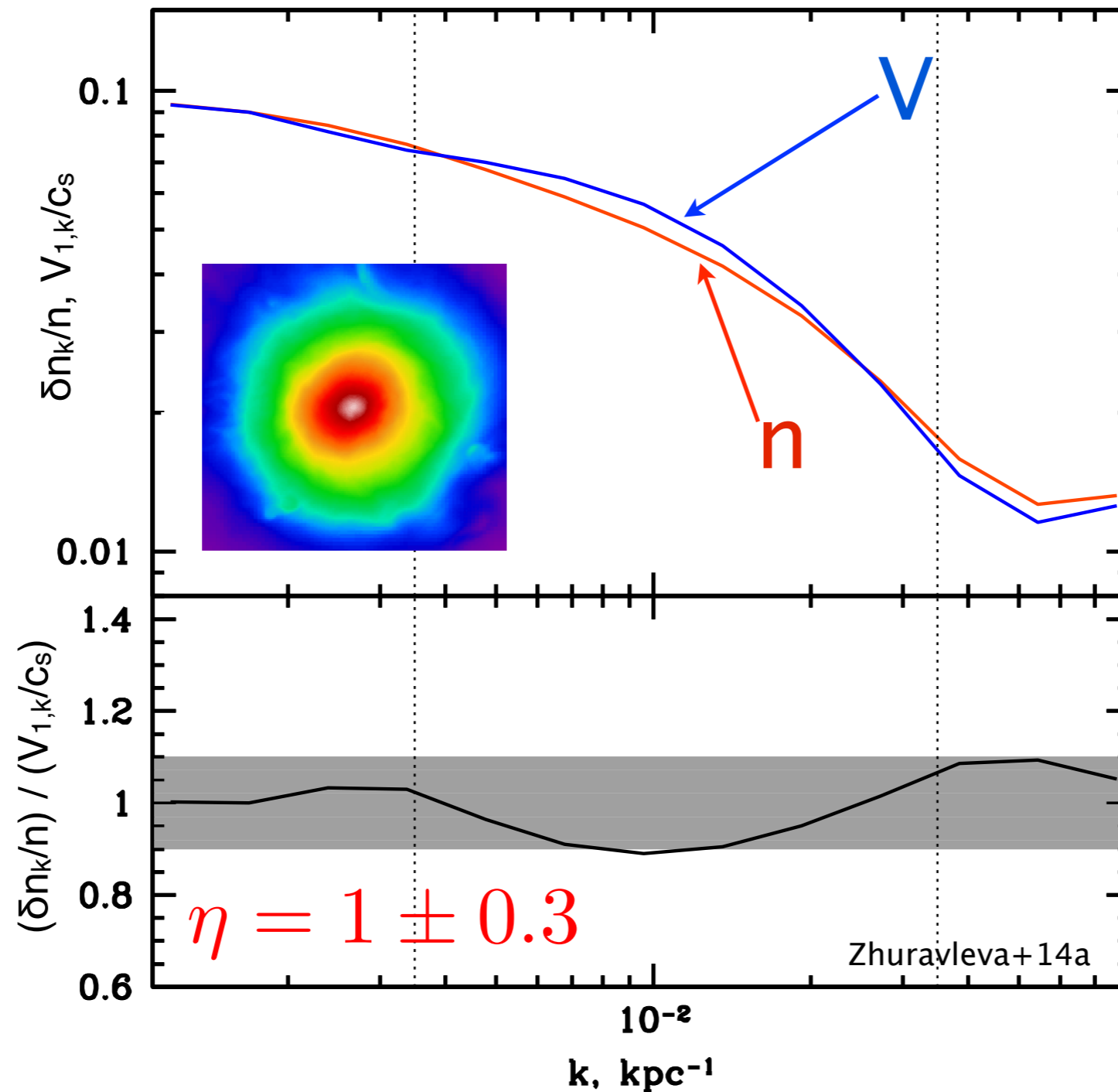


# Verifying Density-Velocity Relation

sample of relaxed clusters from cosmological simulations:

ART N-body+gas dynamics

Kravtsov+06, Nagai+07a

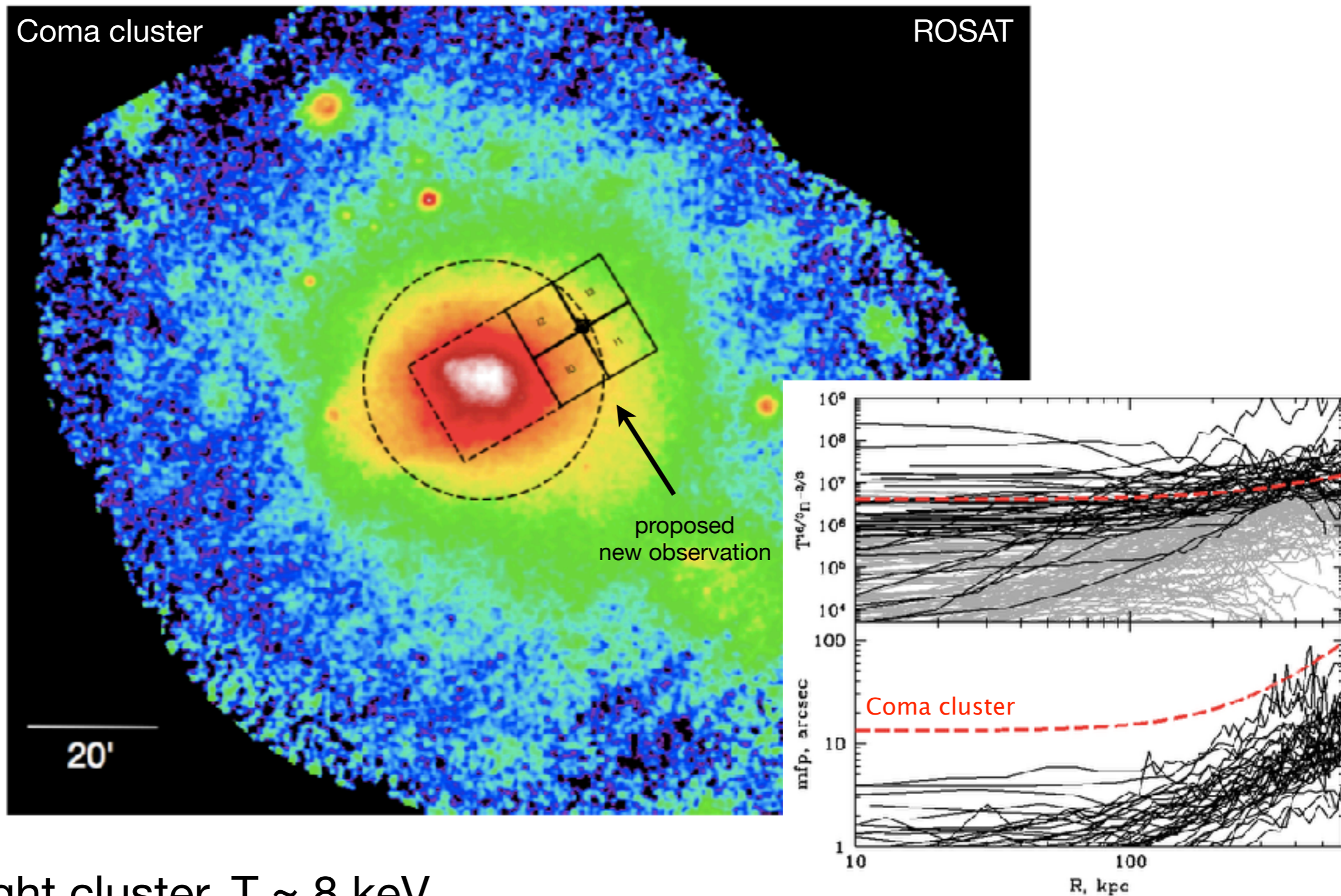


Hitomi  $V$  are consistent with  $V$  from fluctuations in Perseus:

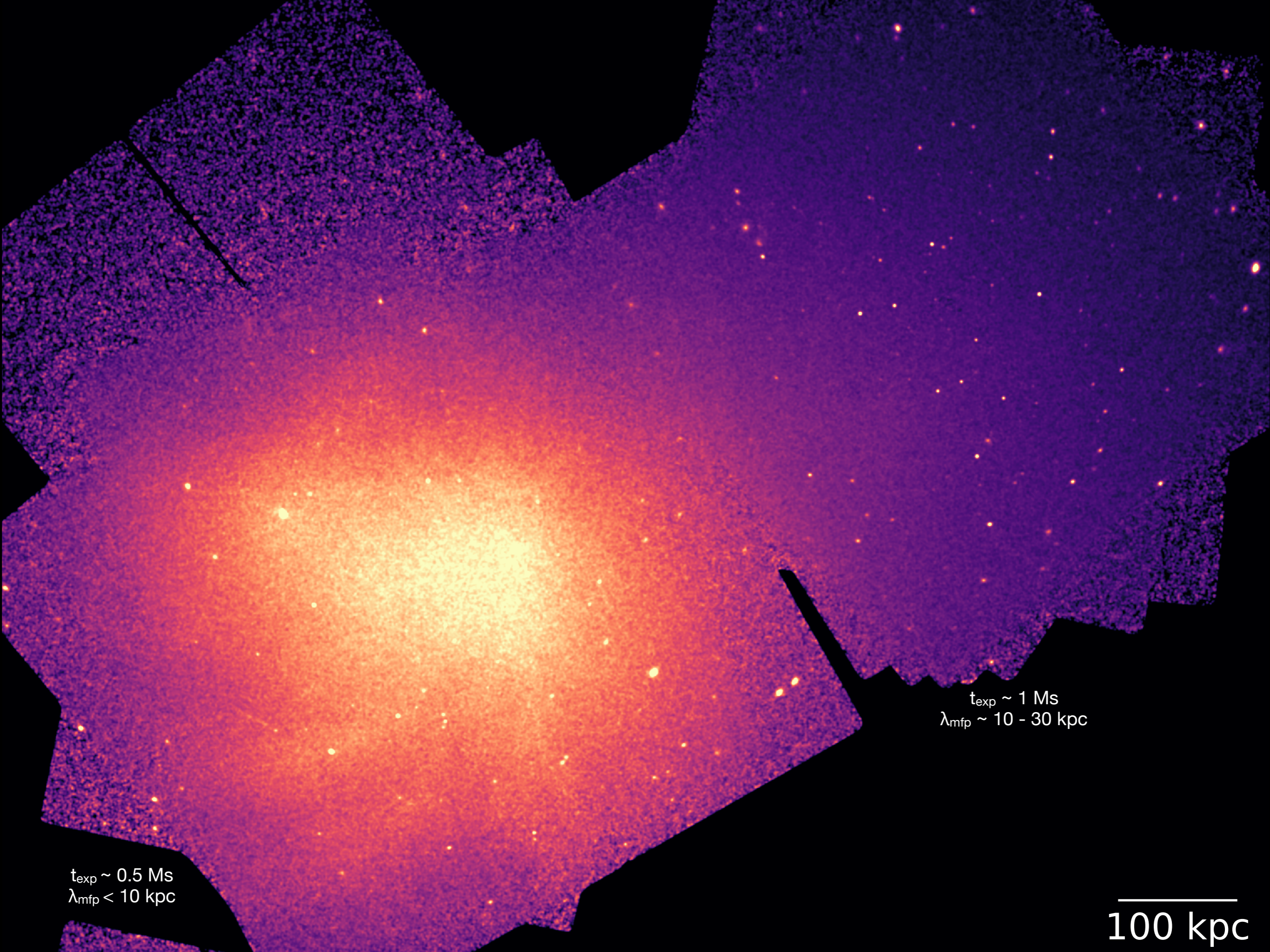
$V \sim 100\text{-}200 \text{ km/s}$

Hitomi collaboration 2016, 2018

# Best Cluster for the mfp Measurements



- hot bright cluster,  $T \sim 8$  keV
- mfp < few kpc in the center and few 10s outside the center
- not an extreme merger

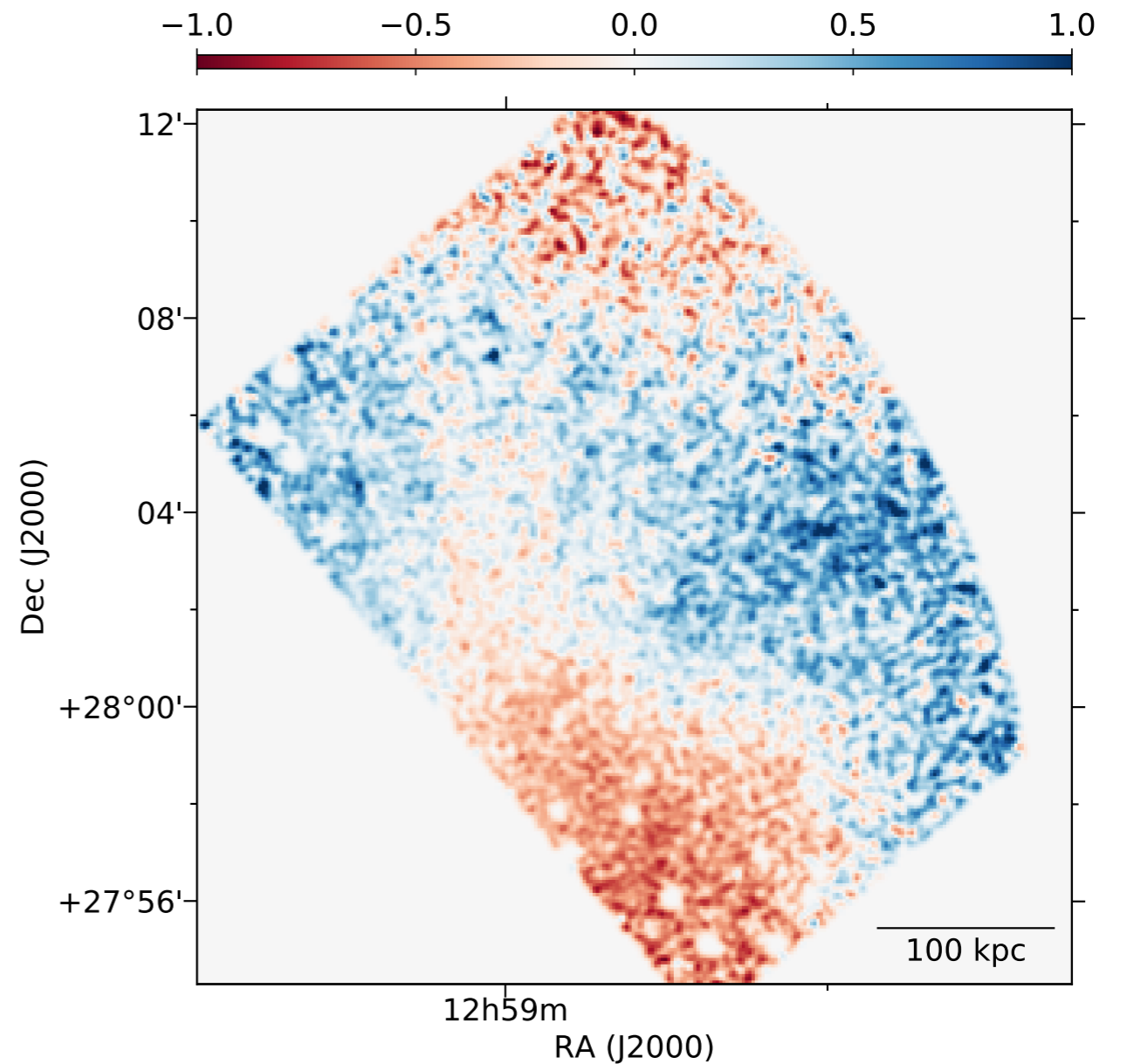
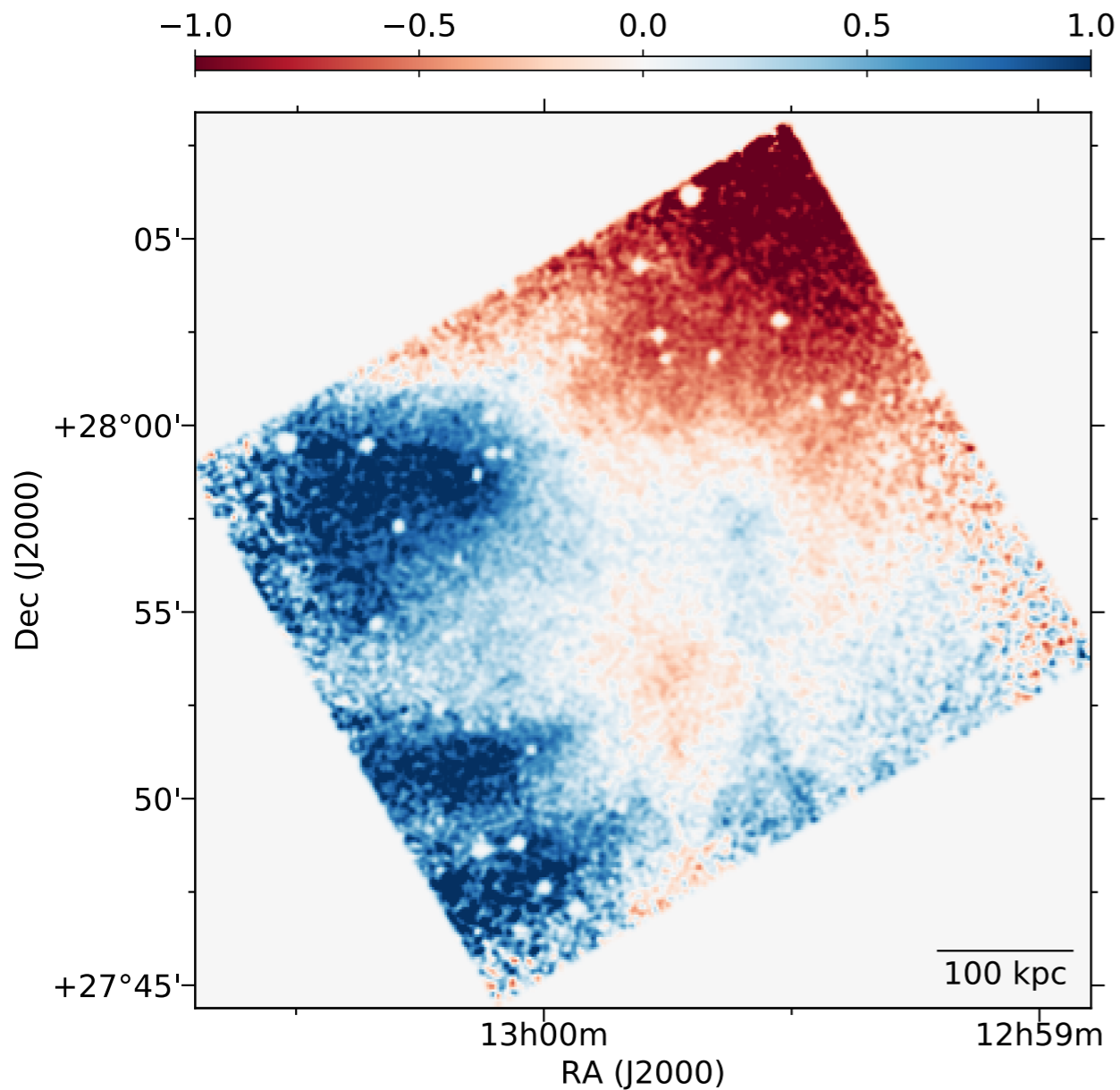


$t_{\text{exp}} \sim 0.5 \text{ Ms}$   
 $\lambda_{\text{mfp}} < 10 \text{ kpc}$

$t_{\text{exp}} \sim 1 \text{ Ms}$   
 $\lambda_{\text{mfp}} \sim 10 - 30 \text{ kpc}$

100 kpc

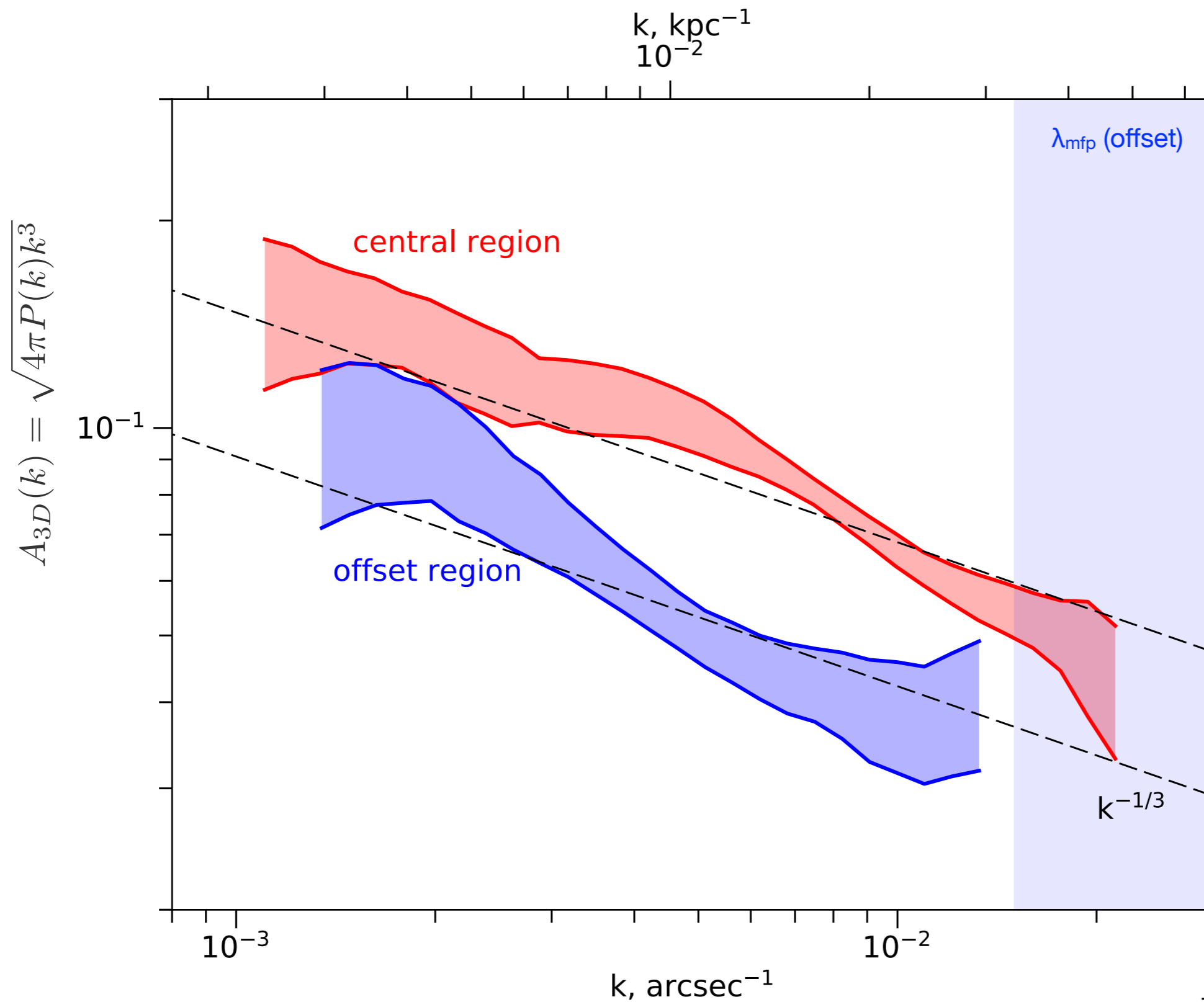
# Surface Brightness Fluctuations in Coma



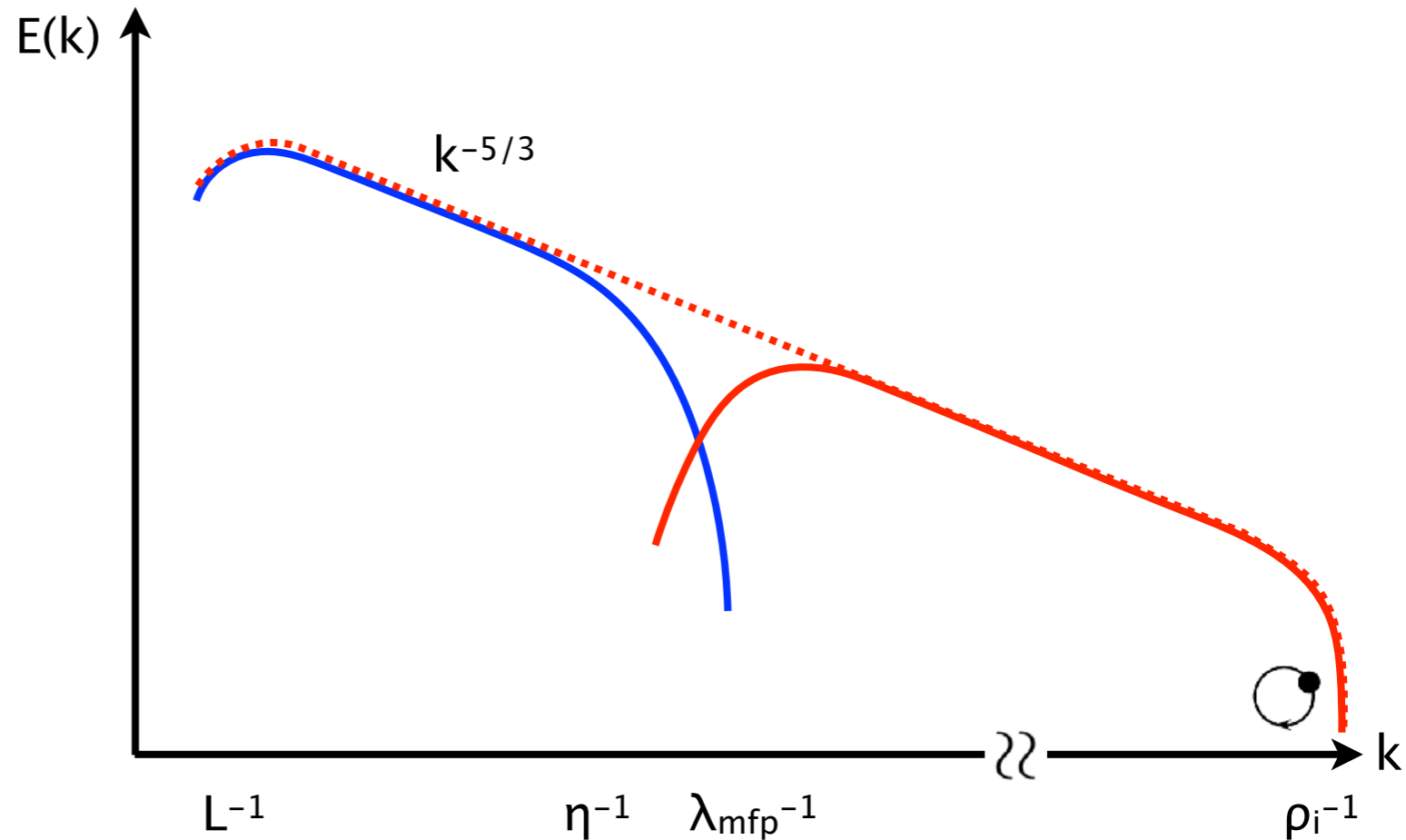
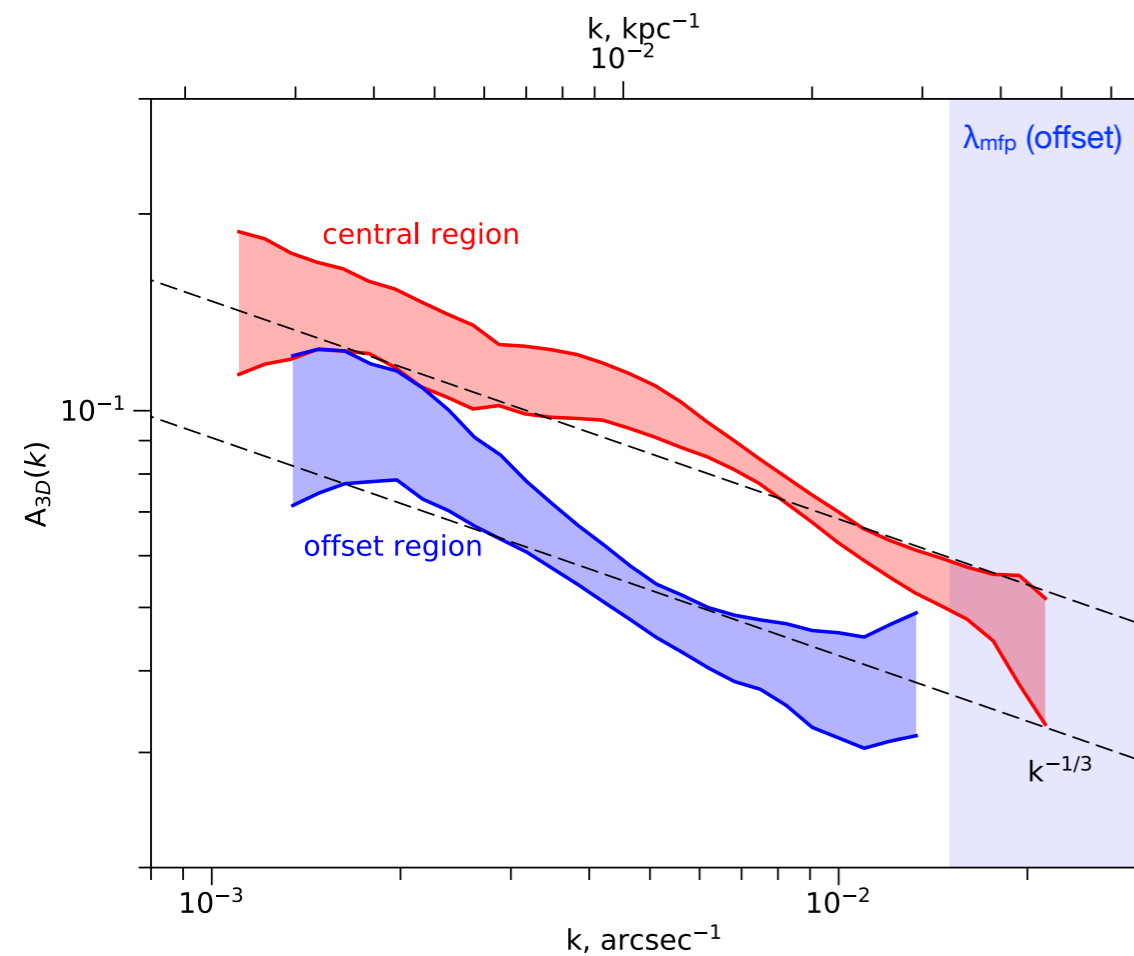
$$\frac{\delta I_X}{I_X} \rightarrow P_{2D}(k) \rightarrow C \times P_{3D}(k) \rightarrow \frac{\delta \rho}{\rho} \rightarrow \frac{V_{1D}}{c_s}$$

Arevalo et al. 2012, Churazov et al. 2012, Zhuravleva et al. 2014b, 2015, 2018 +

# Power Spectrum of Density Fluctuations in Coma



# Power Spectrum of Density Fluctuations in Coma

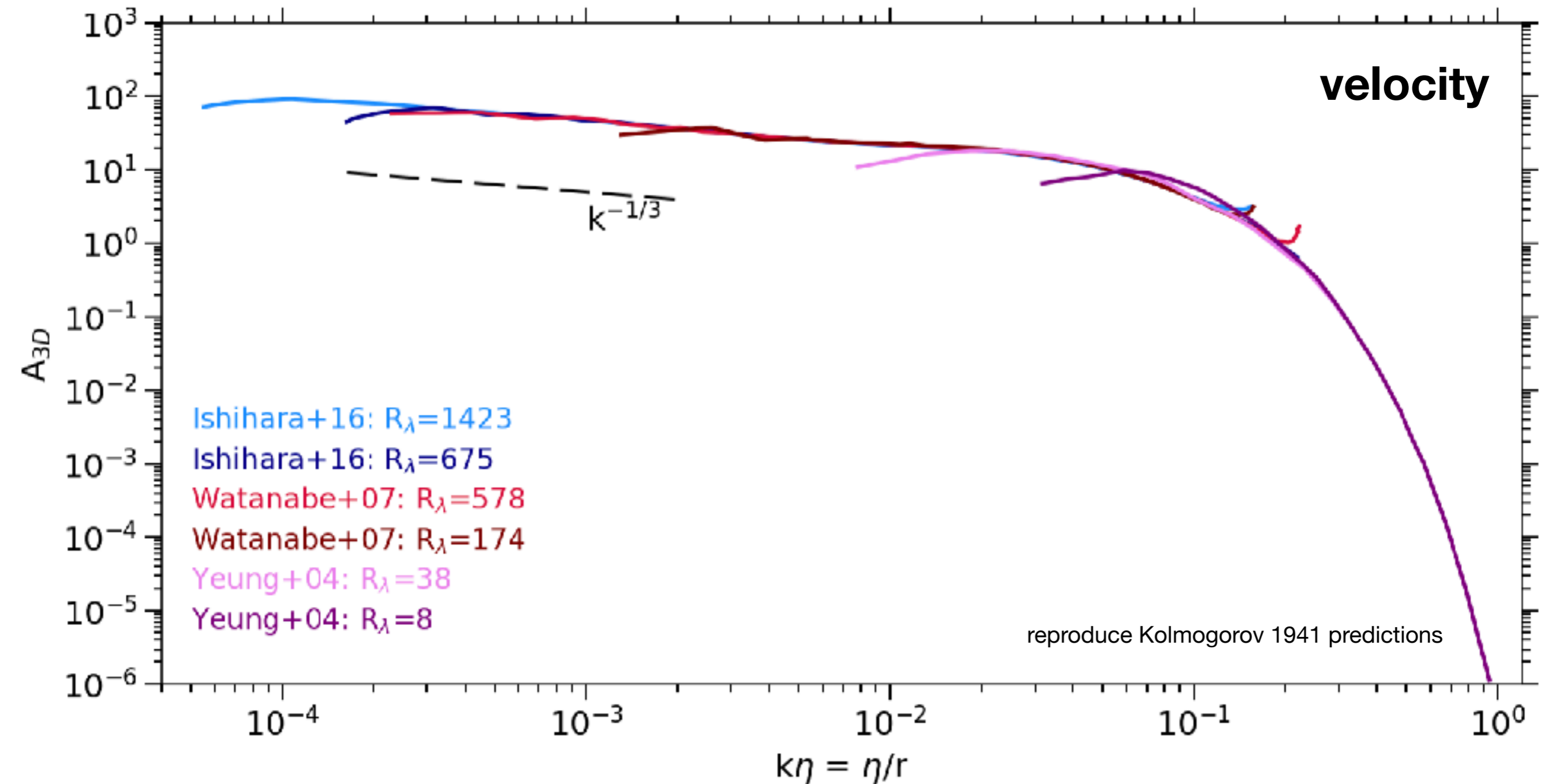


*Hydrodynamic models with pure Coulomb collisions do not describe intracluster plasma*

- Due to particle scattering off microfluctuations produced by plasma instabilities  
e.g., Schekochihin et al. 2010, Kunz et al. 11, Melville et al. 2016
- Possible modification of plasma turbulence by anisotropic transport processes with respect to local magnetic fields

Squire, Schekochihin, Quataert, Kunz 2019, “magneto-immutable” turbulence

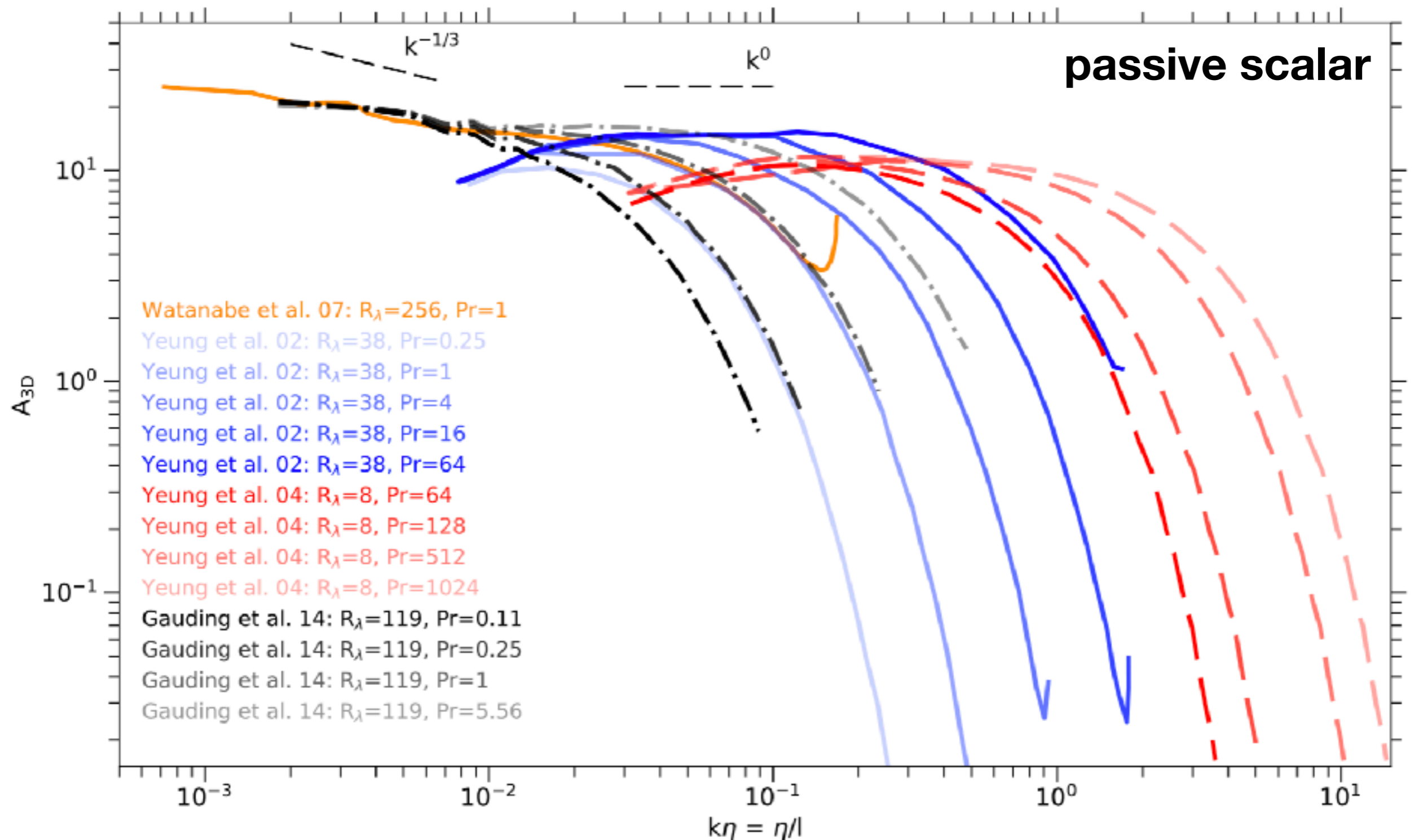
# Direct Numerical Simulations (DNS) of Hydrodynamic Turbulence



Dissipation (Kolmogorov) scale:  $\eta = \left(\frac{\nu^3}{\epsilon}\right)^{1/4}$



# Direct Numerical Simulations (DNS) of Hydrodynamic Turbulence



Thermal Prandtl number:  $Pr = \frac{\nu}{\alpha}$

reproduce Batchelor 1959 predictions

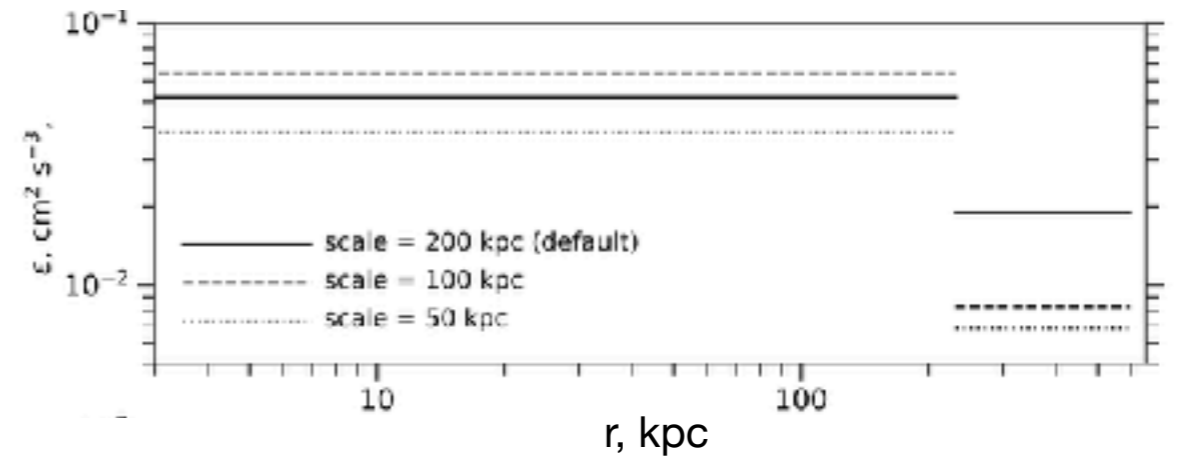
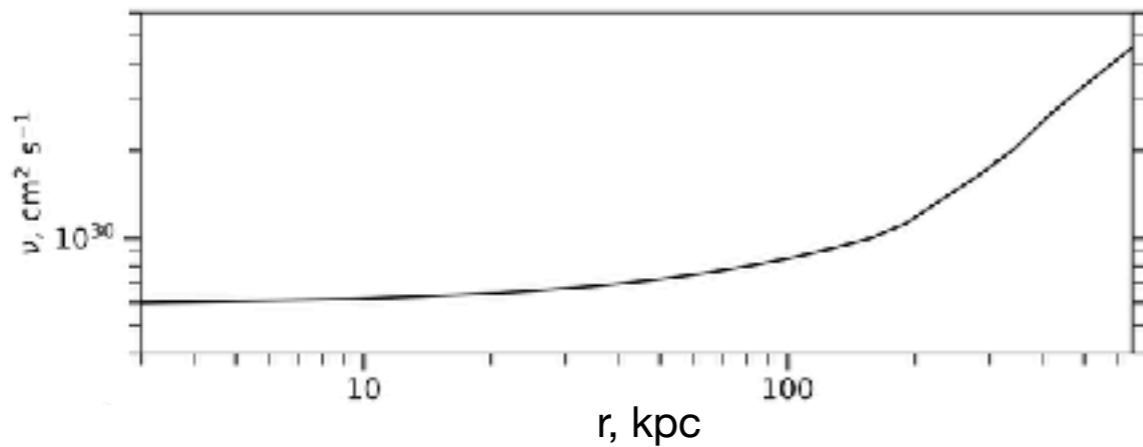
# Kolmogorov (Dissipation) Microscale in Coma

$$\eta = \left( \frac{\nu^3}{\epsilon} \right)^{1/4}$$

$$\nu \propto \lambda_{\text{mfp}} V_{th} = f(n, T)$$

$$\epsilon \text{ directly from } A_{3D}(k): \left( \frac{\delta\rho}{\rho} \right)_k = \frac{V_{1,k}}{c_s}$$

$$\epsilon = C_Q V_{1,k}^3 k$$



$$\eta \sim \begin{array}{l} 20 \text{ kpc (central region)} \\ 50 \text{ kpc (offset region)} \end{array}$$

---


$$\eta = L_{\text{inj}} Re^{-3/4}$$

$$Re = 3ML / \lambda_{\text{mfp}}$$

$$\begin{array}{l} M = 0.2 - 0.5 \\ L_{\text{inj}} = 200 - 500 \text{ kpc} \end{array}$$

$$\eta \sim \begin{array}{l} 10 - 40 \text{ kpc (central region)} \\ 40 - 90 \text{ kpc (offset region)} \end{array}$$

# *Diffusivity of the Passive Scalar in ICM*

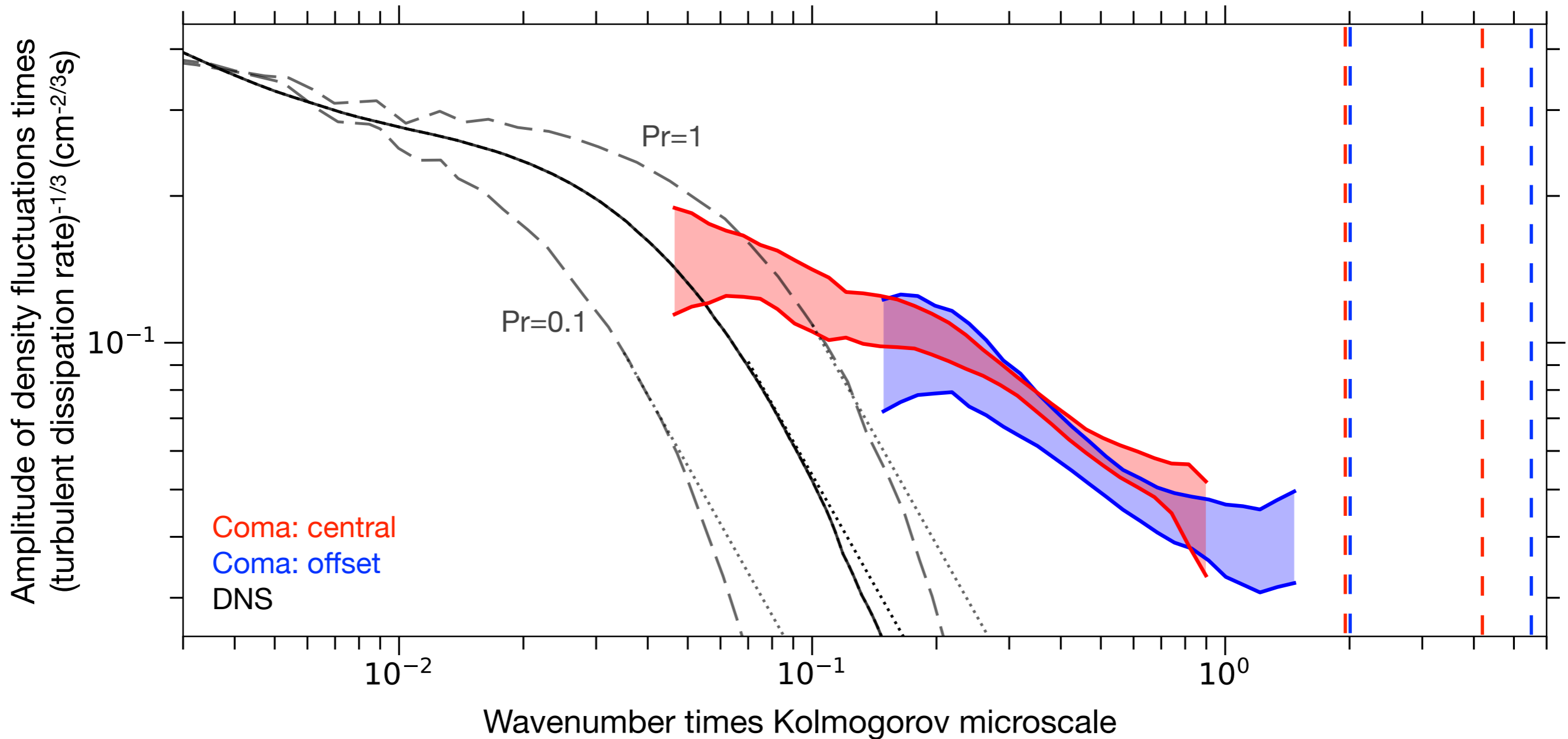
Stratified medium, low viscosity and conduction, small scales:  
entropy fluctuations  $\sim$  passive scalar  $\Rightarrow$   
density fluctuations  $\sim$  passive scalar

For subsonic motions,  $P$  remains smooth  $\Rightarrow$   
 $\rho$  fluctuations are compensated by  $T$  fluctuations

$T$  fluctuations are subject to thermal conduction  $\Rightarrow$   
parametrized by the thermal Prandtl number

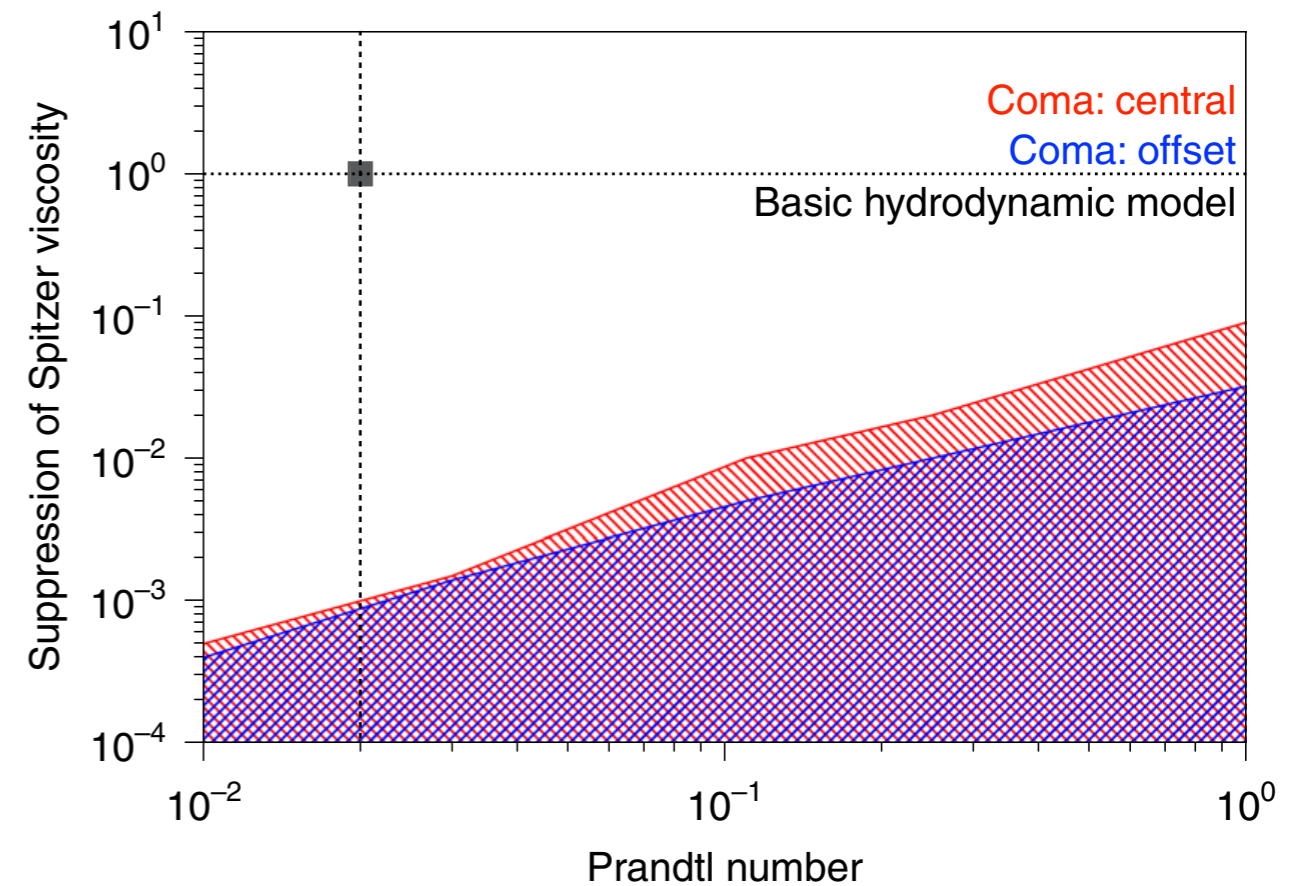
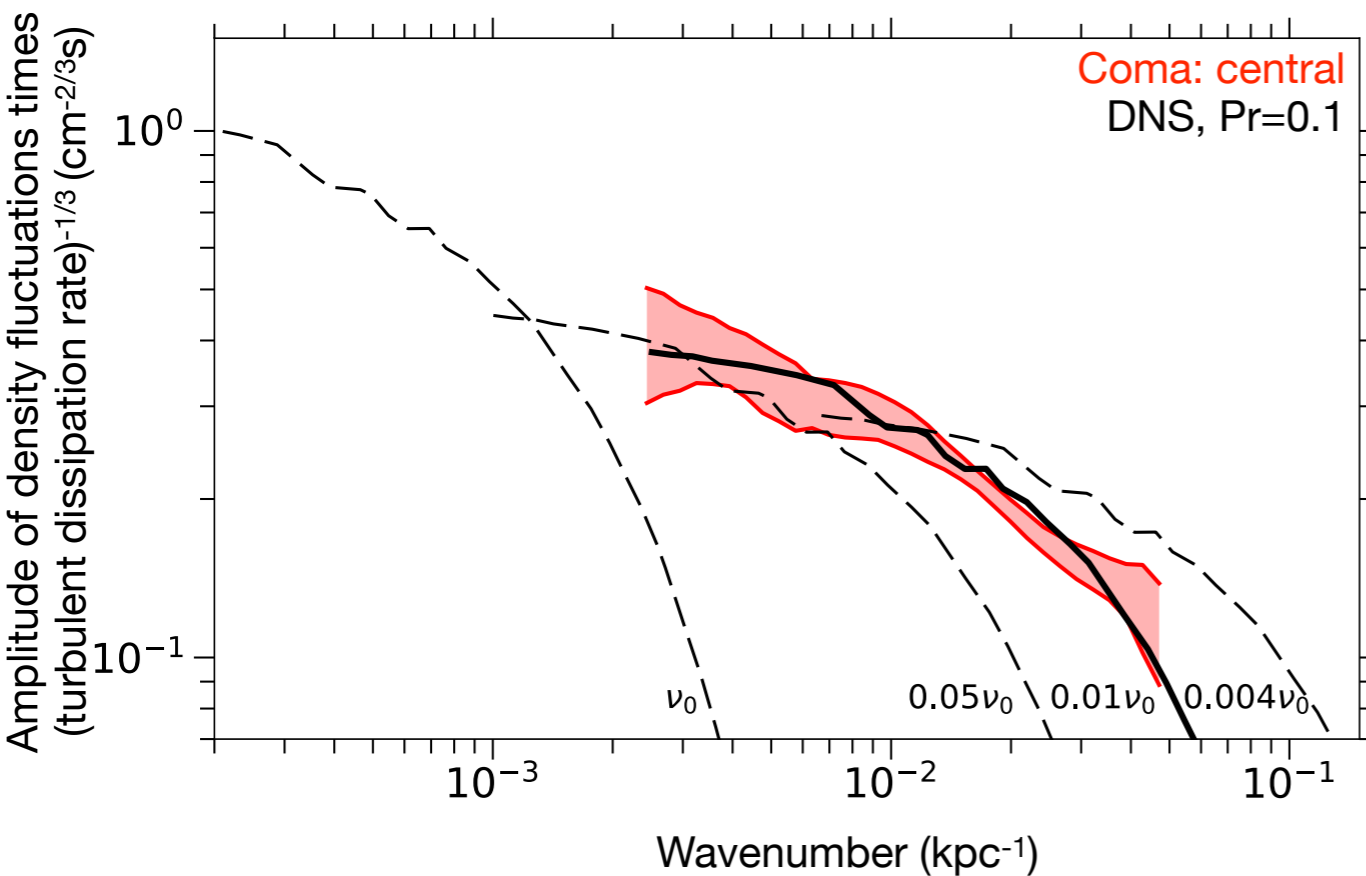
$$Pr \approx \frac{V_i}{V_e} = \left( \frac{m_e}{m_i} \right)^{1/2} \approx 0.02$$

# Coma Observations and DNS Comparison



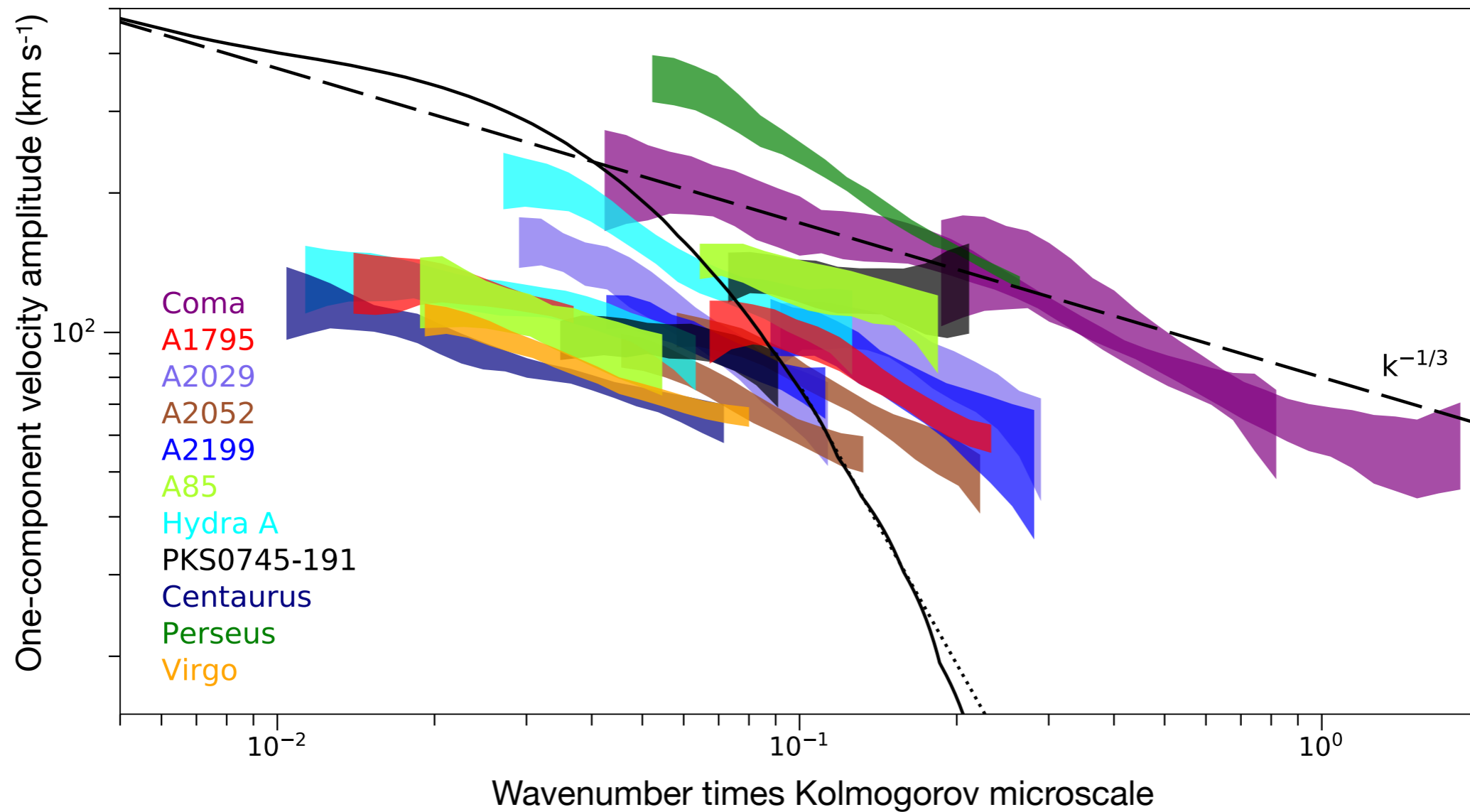
- ▶ *Hydrodynamic model with Coulomb collisions does not describe the ICM plasma*
- ▶ *Effective isotropic viscosity is suppressed in the bulk ICM*

# Coma Observations and DNS Comparison: Constraints on Viscosity



*Isotropic viscosity is suppressed in the **bulk** gas by at least a factor of  $\sim 10$ -1000 for  $Pr = 1$ -0.02*

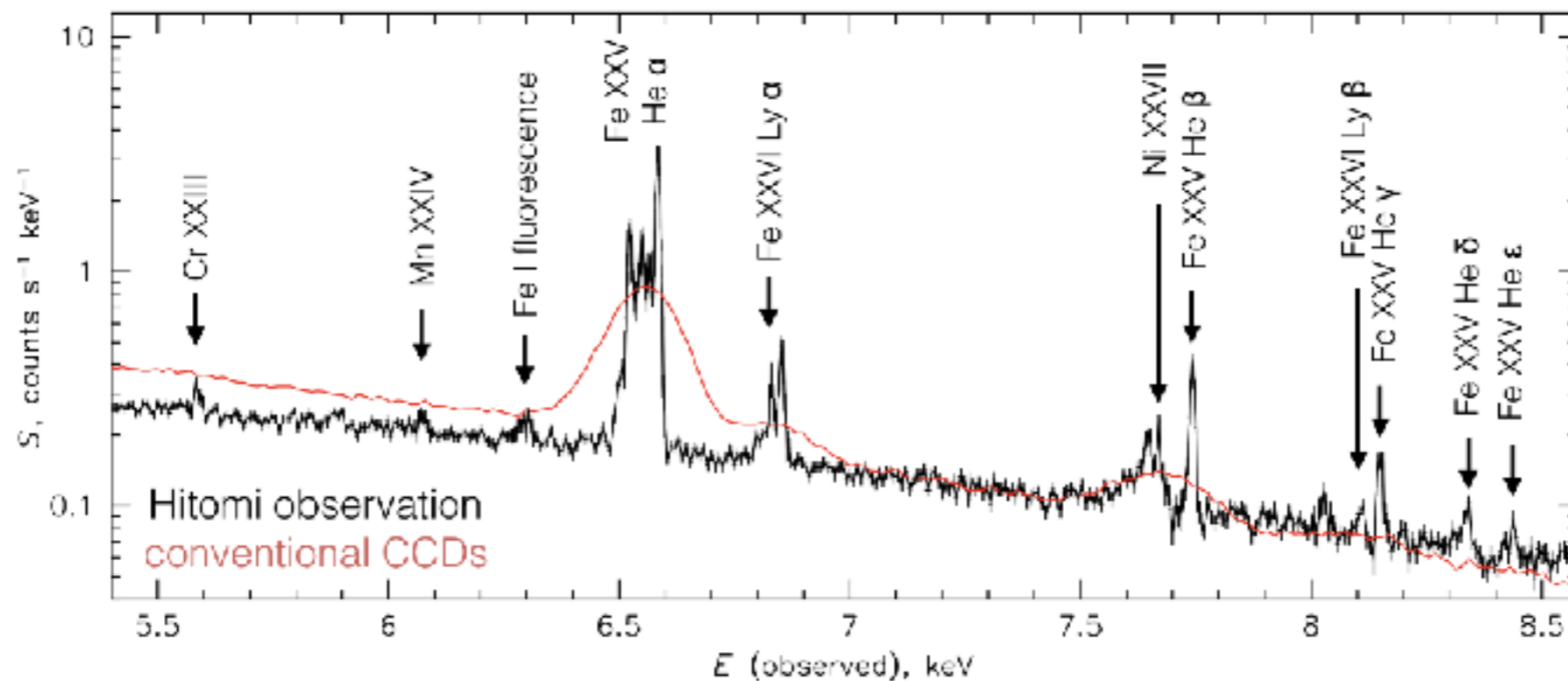
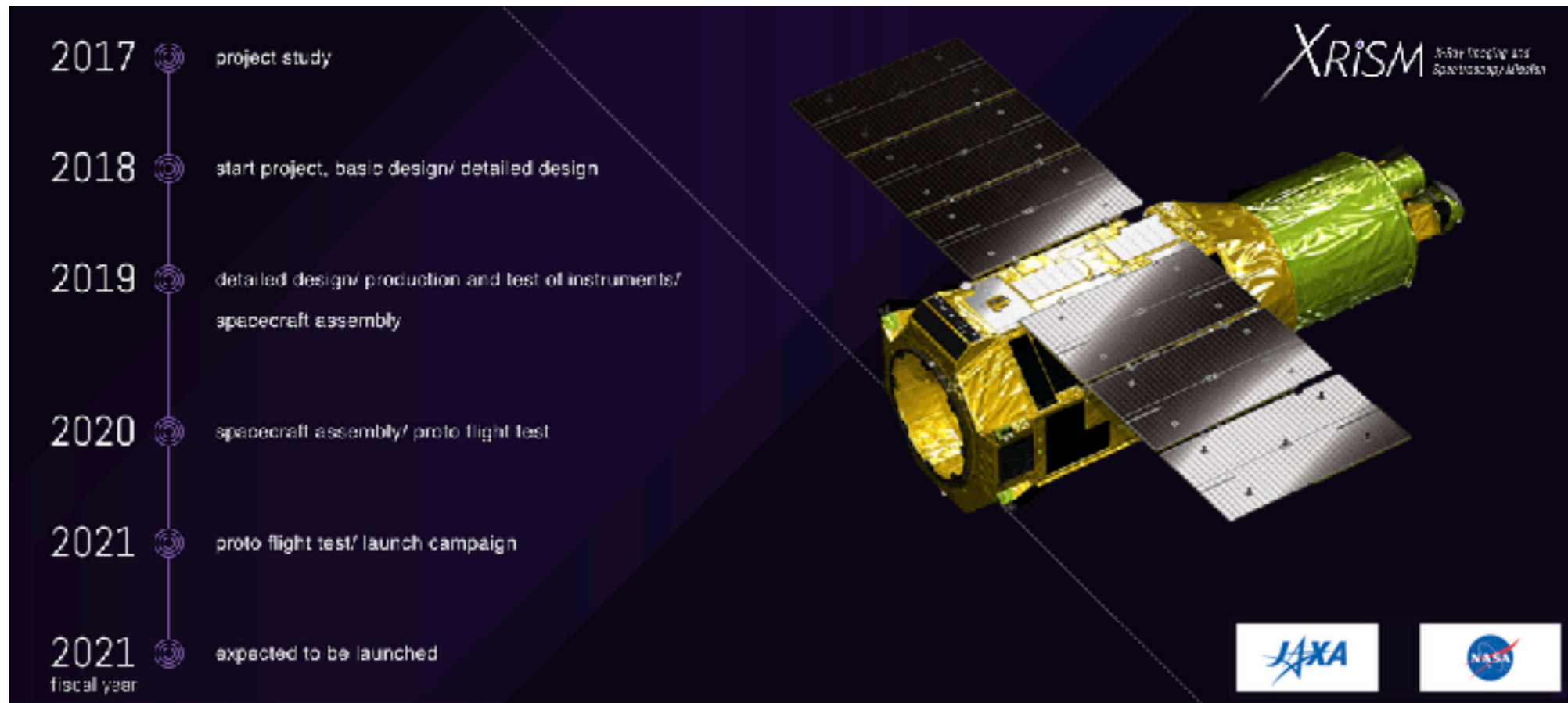
# Other Galaxy Clusters



In many cool cores, DNS simulations with Spitzer viscosity cannot describe power spectra of ICM fluctuations, however for robust conclusions k-range should be larger

# Uncertainties

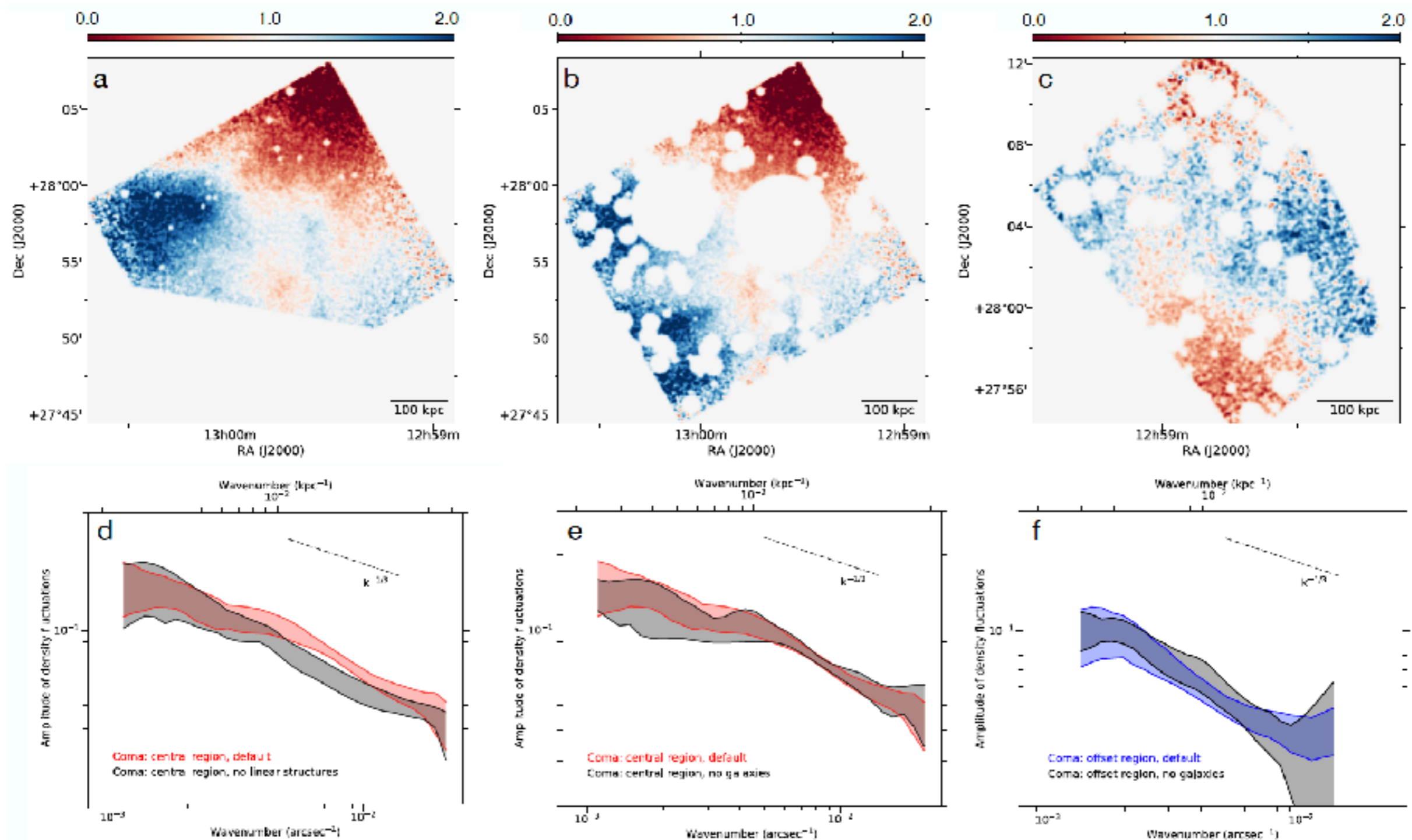
No direct velocity measurements  $\rightarrow$  XRISM (2022), Athena, Lynx



# Uncertainties

No direct velocity measurements  $\rightarrow$  XRISM (2022), Athena, Lynx

Additional structures associated with low-entropy gas, cD and normal galaxies  $\rightarrow$  no significant changes



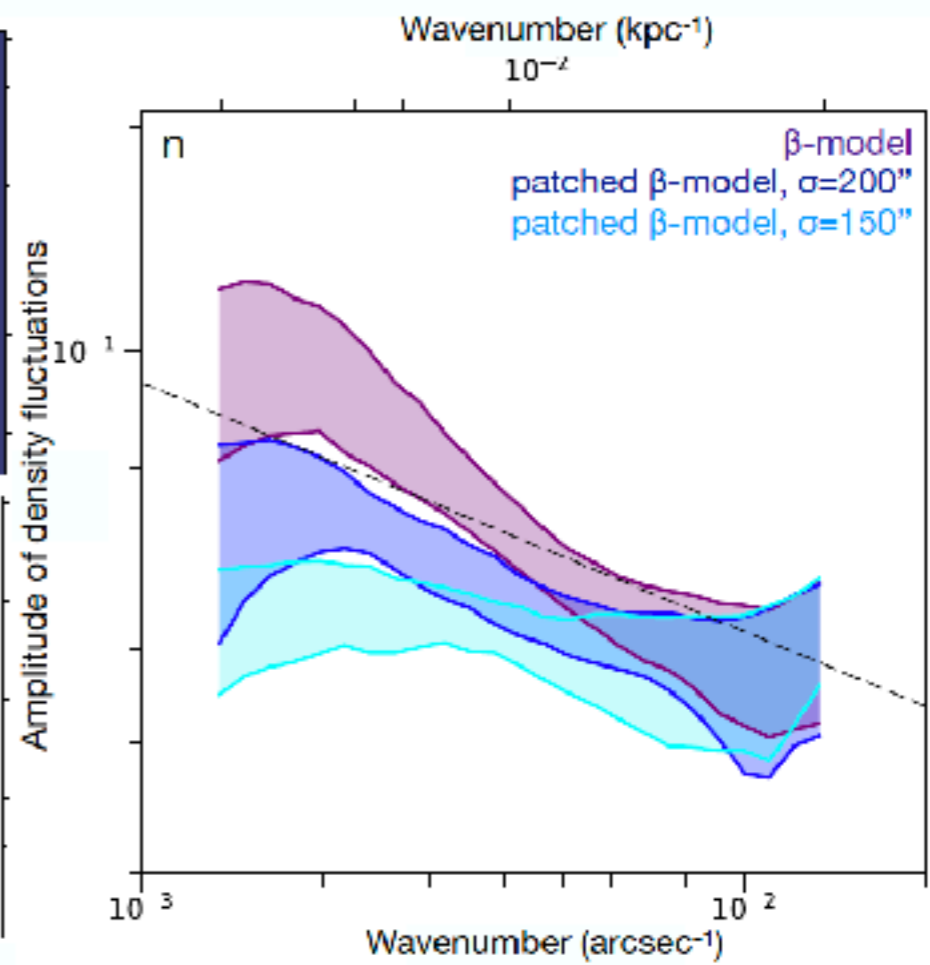
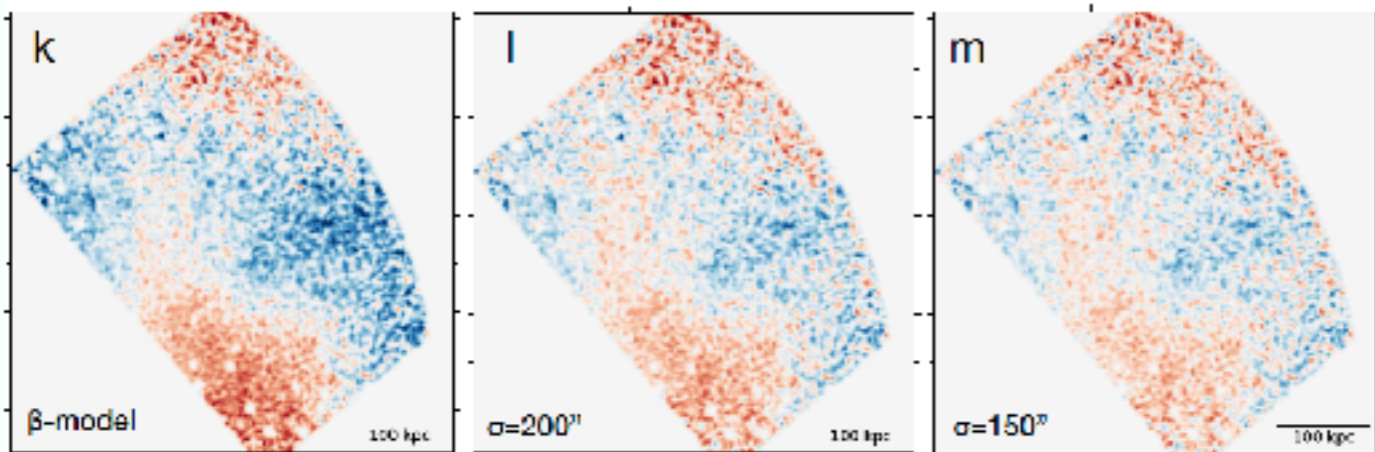
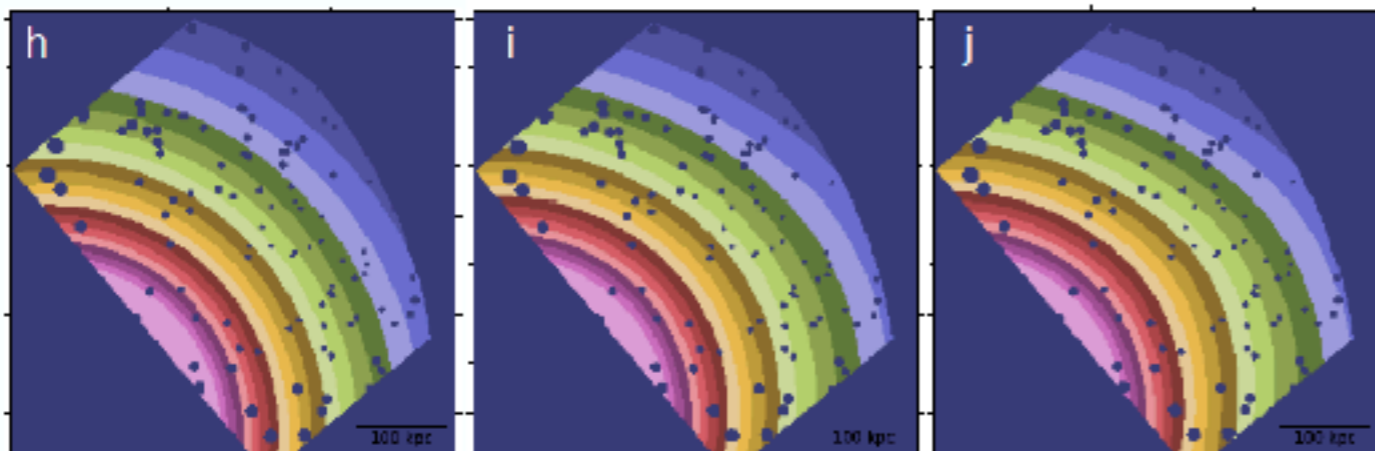
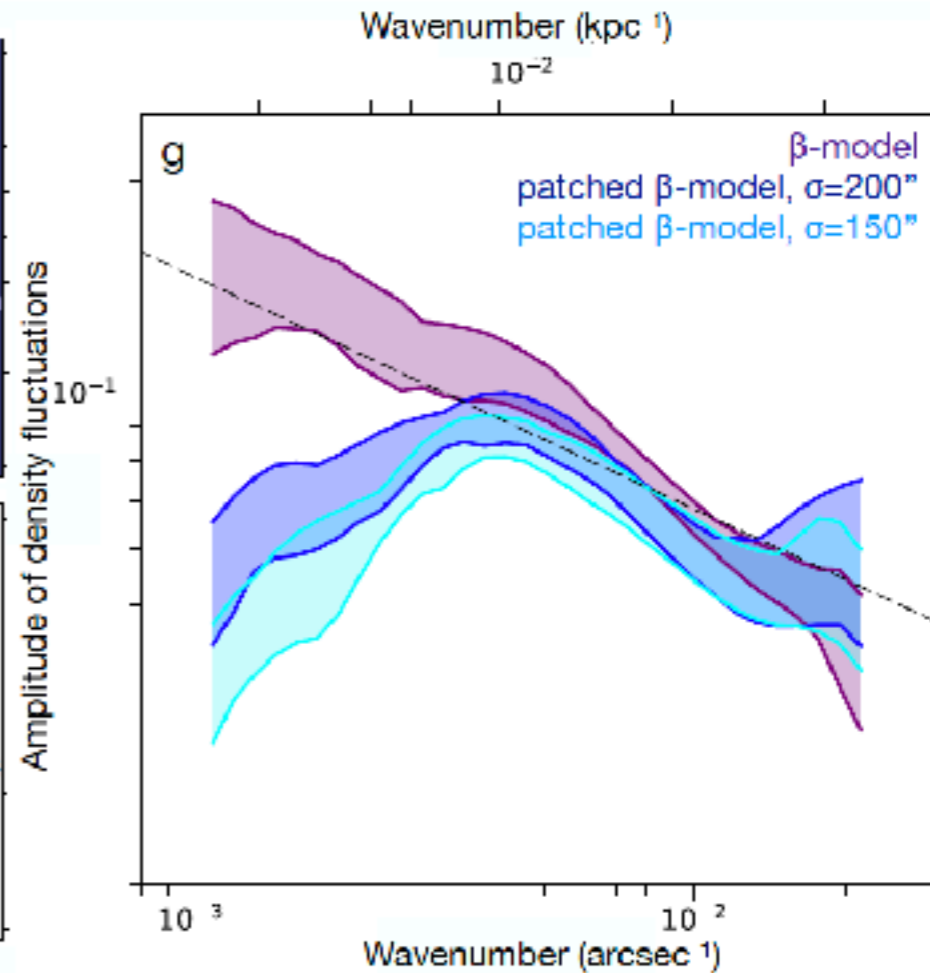
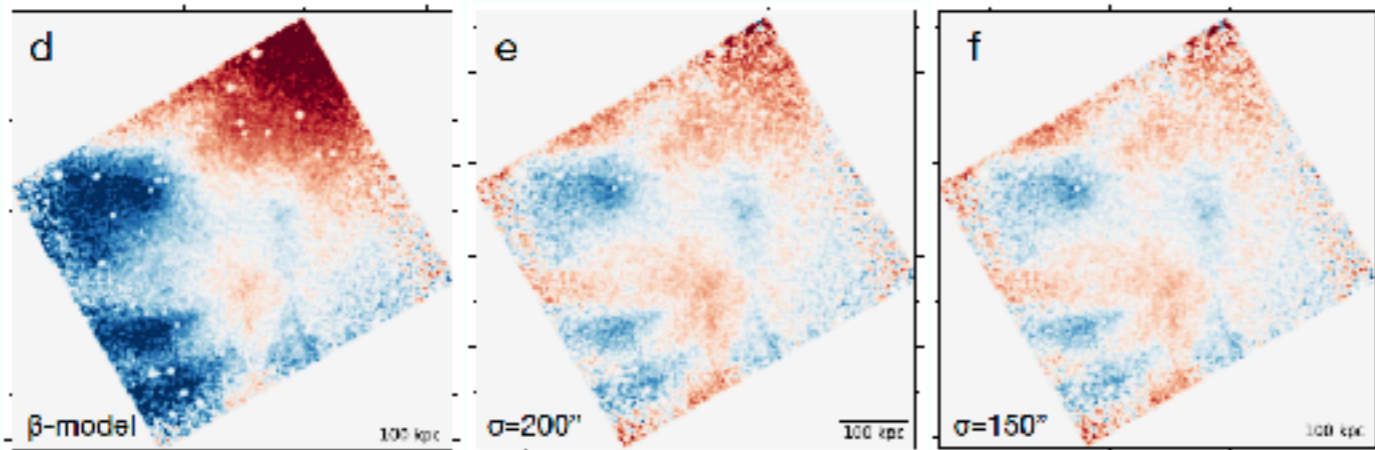
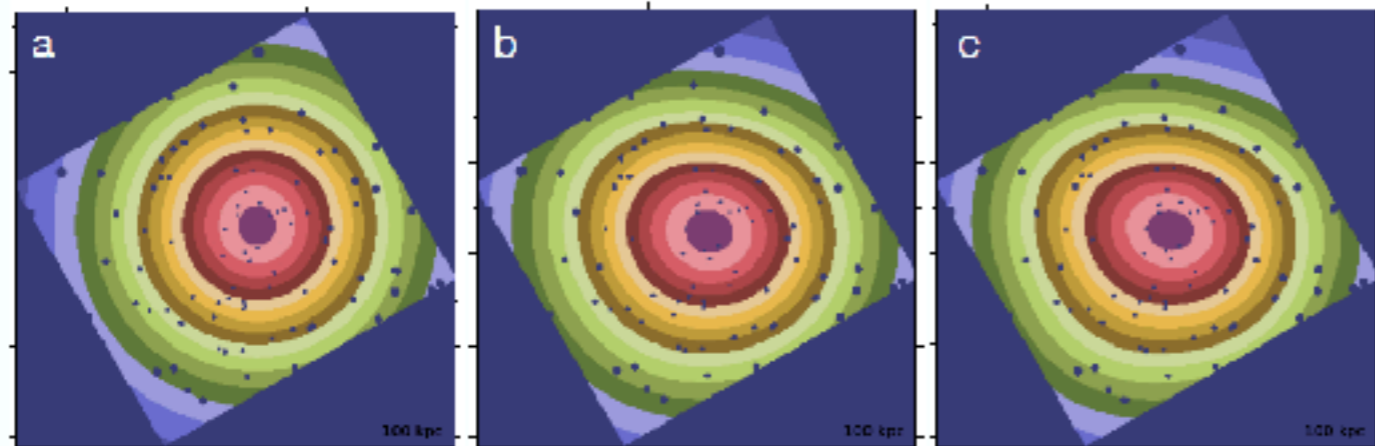


# *Uncertainties*

No direct velocity measurements —> XRISM (2022), Athena, Lynx

Additional structures associated with low-entropy gas, cD and normal galaxies —> no significant changes

Choice of underlying model —> does not steepen the observed spectra, amplitude of fluctuations on mfp remains the same



# *Uncertainties*

No direct velocity measurements —> XRISM (2022), Athena, Lynx

Additional structures associated with low-entropy gas, cD and normal galaxies —> no significant changes

Choice of underlying model —> does not steepen the observed spectra, amplitude of fluctuations on mfp remains the same

Uncertainties on mfp, Kolmogorov microscale, etc —> a factor of a few on viscosity, the main conclusions remain unchanged

## *Summary:*

- Observations started probing mfp scale of the ICM
- Weakly-collisional, high- $\beta$  plasma in galaxy clusters is inconsistent with hydrodynamic fluid with Spitzer transport coefficients
- Consistent with the presence of plasma instabilities that, by interacting with particles, increase the plasma collision rate, and/or with the establishment of a new type of turbulence in which motions adjust to be immune to the locally anisotropic plasma viscosity
- If isotropic transport processes: effective  $Re$  is large in the bulk ICM, viscosity is suppressed at least by a factor of 10 regardless of the level of thermal conduction
- Numerical simulations should use the lowest-possible viscosity